

FTA



ISO 11901-2

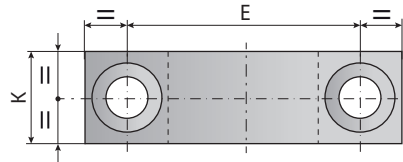
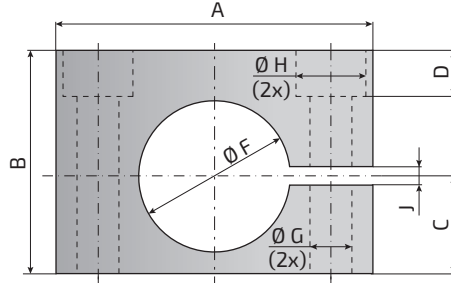


VDI 3003

This series includes the models compliant with automotive standards /  
Bu sayfadaki parçalar aşağıdaki otomotiv standartlarını karşılamaktadır

<b>BMW</b>	B2 4009	<b>General Motors</b>	90.25.07
<b>FCA</b>	075.90.95	<b>MB</b>	BB...
<b>Ford</b>	W-DX35-62M	<b>VW</b>	39D 848

## Front support / Ön destek

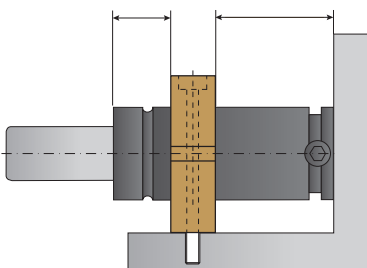


Model Model	Reference to Standards Referans standart	For models... Modeller için...	A mm	B mm	C mm	D mm	E mm	Ø F mm	Ø G mm	Ø H mm	J mm	K mm
FTA 32	ISO 11901-2, VDI 3003	AGS350, IGS150, TGS700, VV320-80, VV500, VV565	68	48	20.9	10	50	32.5	9	15	4	20
38	ISO 11901-2, VDI 3003	AGS500, IGS250, TGS1000	74	54	23.9	16	54	38.5	9	15	4	20
45	ISO 11901-2, VDI 3003	AGS750, IGS500, LGS500	80	60	27.5	22	60	45.5	9	15	4	20
50	ISO 11901-2, VDI 3003	AGS1000, IGS750, TGS2000, VV750	90	70	30	25	68	50.5	11	18	5	30
63 A	ISO 11901-2, VDI 3003	AGS1500, TGS3000	108	82	36.5	27	84	63.5	11	18	5	30
63 B	-	AGS1500, TGS3000	105	80	40	11	80	63	10.5	17	10	30
75	ISO 11901-2, VDI 3003	AGS2400, IGS1500, TGS5000, VV2385	125	94	42	32	100	75.5	13.5	20	5	30
95	ISO 11901-2, VDI 3003	AGS4200, IGS3000, TGS8000, VV2945	140	115	52.5	33	115	95.5	13.5	20	5	30
120	ISO 11901-2, VDI 3003	AGS6600, IGS5000, TGS12000	170	140	65	58	145	120.5	13.5	20	7	30
150	ISO 11901-2, VDI 3003	AGS9500, IGS7500	200	170	80	68	175	150.5	13.5	20	7	30

## Fixing possibilities / Montaj olasılıkları

**MAX**  
0.5 x diameter of the gas spring body  
0.5 x gazlı yay gövde çapı

**MIN**  
1/3 (one third) of dimension **Lmin** of the gas spring  
Gazlı yayın **Lmin** boyutunun 1/3'ü (üçte biri)



Dimension **MIN** must be respected to allow the over-pressure and over-stroke safety system to work properly (see dedicated catalogue section).

Aşırı basınç ve aşırı strok güvenlik sisteminin düzgün çalışmasına izin vermek için **MIN** boyutuna uyulmalıdır (özel katalog bölümüne bakın).